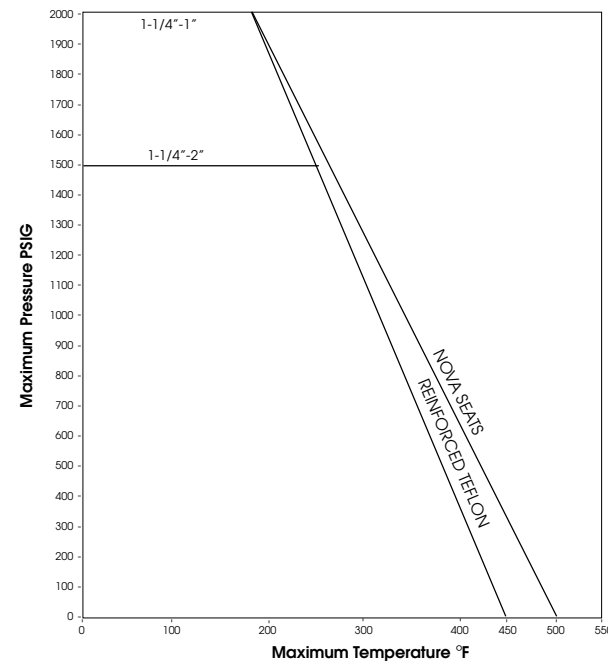


SHARPE® VALVES

PRESSURE TEMPERATURE RATINGS



HOW TO ORDER

VALVE SIZE	VALVE SERIES	BODY & ENDS	SEAT & SEAL
1/4" 3/8" 1/2" 3/4" 1" 1-1/4" 1-1/2" 2"	5457	4 = Carbon Steel 6 = Stainless Steel	RT Seats PTFE Seats as Standard N = Nova Seats/ Graphoil Seal

3/4" 5457 4 N



Toll-Free 1-877-7SHARPE
Web Site: www.sharpevalves.com

1260 Garnet Drive
Northlake, Illinois 60164 U.S.A

Due to continuous development of our product range we reserve the right to change the dimensions and information contained in the leaflet as required.

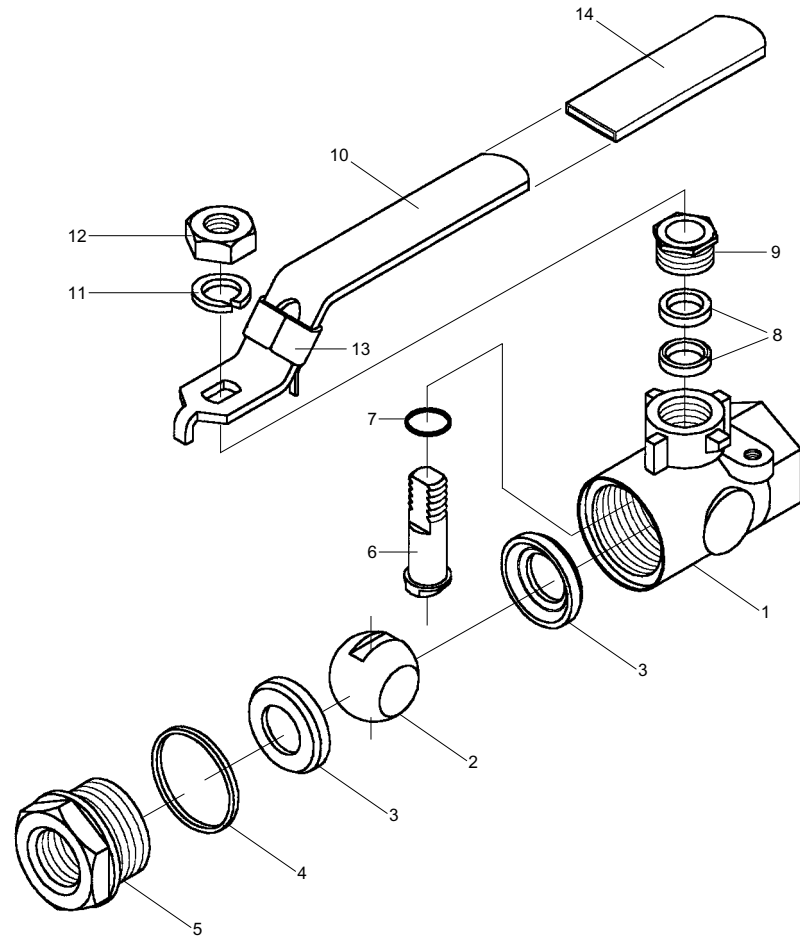
SHARPE® VALVES



SERIES 5457
THREADED STANDARD
PORT BALL VALVE

SERIES 5457
VALVE PARTS AND IDENTIFICATION

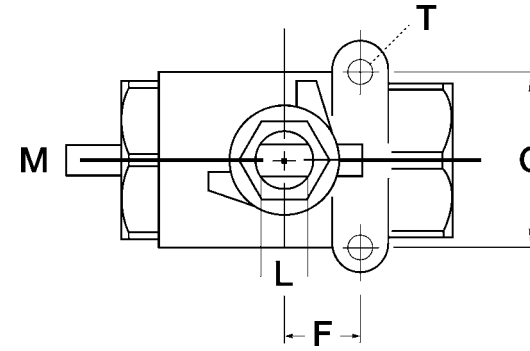
ASTM-A216
 ASTM-A351
 1/4" - 1" 2000 lb. WOG
 1-1/4" - 2" 1500 lb. WOG
 LOCKING DEVICE
 ACTUATOR MOUNTING PAD
 STANDARD PORT
 BLOWOUT PROOF STEM
 STEAM RATINGS: (SATURATED)
 WITH REINFORCED TEFLON
 SEATS 150 WSP
 WITH NOVA SEATS 250 WSP



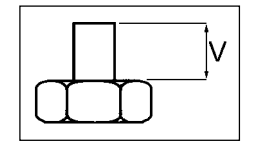
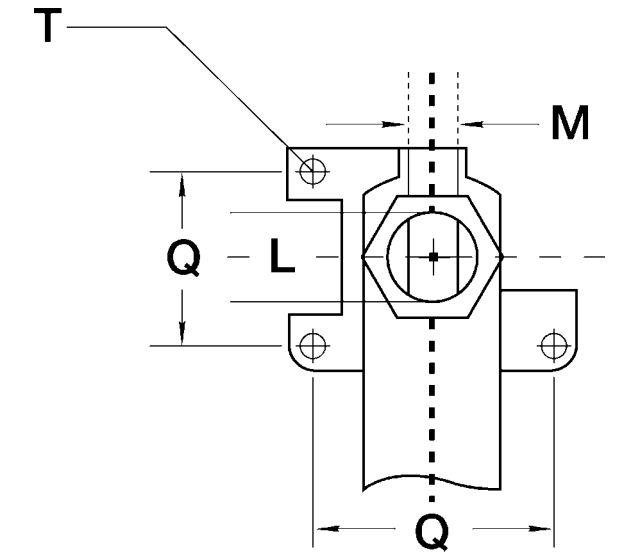
PART NO.	PART	QTY.	MATERIAL
1	Body	1	ASTM-A216 WCB ASTM-A351 CF8M
2	Ball	1	316 Stainless Steel
3	Seat	2	RPTFE / NOVA
4	Body Seal	1	PTFE / Graphite
5	End Plug	1	ASTM-A216 WCB ASTM-A351 CF8M
6	Stem	1	316 Stainless Steel
7	Thrust Washer	1	PTFE
8	Stem Packing	2	PTFE / Graphoil
9	Packing Nut	1	Stainless Steel - 316
10	Handle	1	Stainless Steel - 304
11	Lock Washer	1	Stainless Steel - 304
12	Handle Nut	1	Stainless Steel - 304
13	Locking Device	1	Stainless Steel - 304
14	Handle Sleeve	1	Plastic

SERIES 5457
VALVE DIMENSIONS

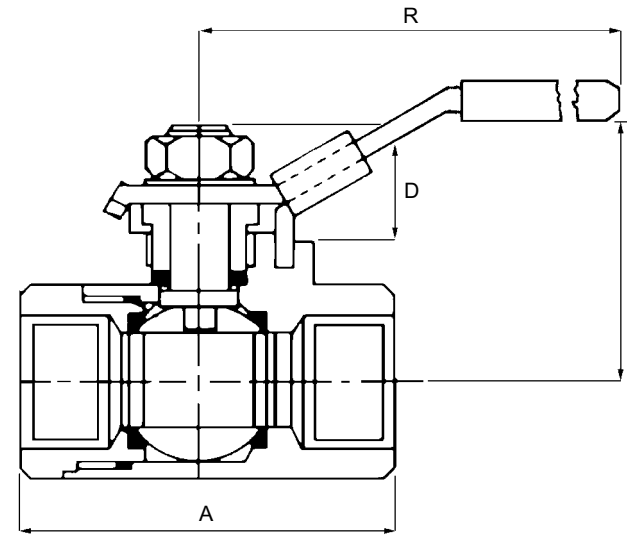
1/4" - 1"



1-1/4" - 2"



1/4" - 2"
 STEM ARRANGEMENT
 FOR SERIES 5457



SIZE	A	D	N	R	Q	F	M	L	T	V	PORT SIZE	APPROX. WEIGHT
1/4"	2.25	0.95	1.75	4.00	1.10	0.45	0.22	0.30	10 - 24	0.30	0.50	0.60
3/8"	2.25	0.95	1.75	4.00	1.10	0.45	0.22	0.30	10 - 24	0.30	0.50	0.60
1/2"	2.32	1.12	2.00	4.00	1.10	0.45	0.22	0.30	10 - 24	0.32	0.50	0.55
3/4"	3.12	1.20	2.20	5.00	1.35	0.85	0.25	0.42	10 - 24	0.35	0.70	1.10
1"	3.37	1.20	2.45	5.00	1.35	0.85	0.25	0.42	10 - 24	0.35	0.88	1.50
1-1/4"	4.10	1.06	3.40	5.75	1.40*	---	0.37	0.61	1/4 - 20	0.50	1.00	2.75
1-1/2"	4.35	1.10	3.40	5.75	1.40*	---	0.37	0.61	1/4 - 20	0.50	1.25	3.50
2"	5.40	1.10	3.75	5.75	1.40*	---	0.37	0.61	1/4 - 20	0.50	1.50	5.25

CV* DATA

SIZE	CV*
1/4"	6
3/8"	6
1/2"	9
3/4"	24
1"	35
1-1/4"	47
1-1/2"	81
2"	105

*CV: The volume of water in gal./min. that will pass through a given valve with a pressure drop of 1 PSI.