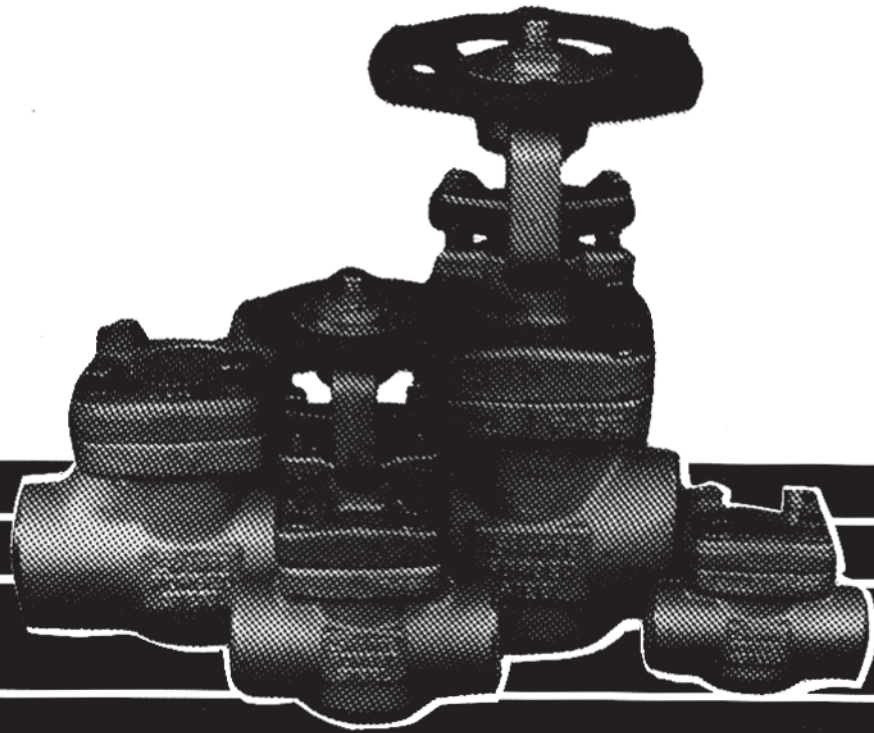


SHARPE[®] VALVES



FORGED STEEL VALVES

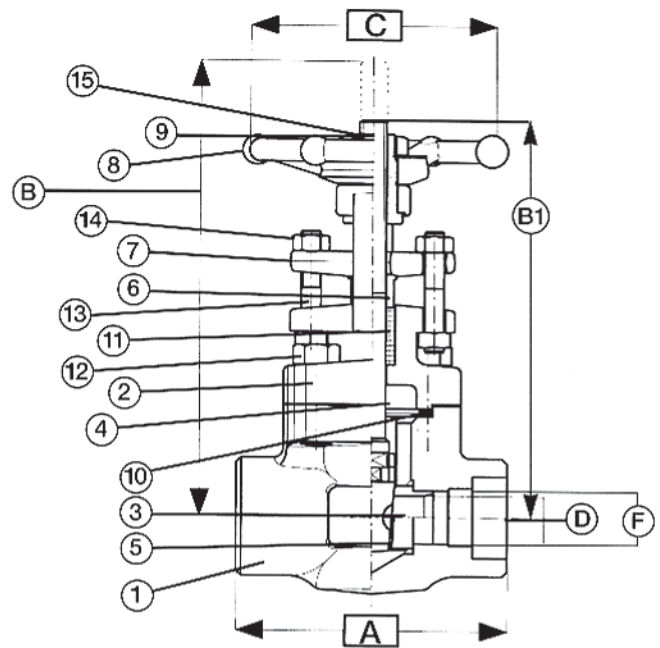
SHARPE® VALVES

FORGED STEEL GATE VALVE

CLASS 800
ASTM A105
BOLTED BONNET
THREADED OR SOCKET WELD

FIG. 34834

PART	NAME	MATERIAL
1	BODY	ASTM A105
2	BONNET	ASTM A105
3	WEDGE	ASTM A182/F6a
4	STEM	ASTM A182/F6a
5	SEATS	ASTM A182/F6a STELLITED
6	PACKING GLAND	AISI 316
7	GLAND FLANGE	ASTM A105
8	HANDWHEEL	CARBON STEEL
9	HANDWHEEL NUT	CARBON STEEL
10	GASKET SPIRAL WOUND	AISI 316 + GRAPHITE
11	PACKING	PREFORMED GRAPHITE
12	BONNET BOLT	ASTM A193/GR B8
13	GLAND STUDS	AISI 410
14	GLAND NUTS	ASTM A194/2H
15	NAME PLATE	ALUMINUM



APPLICABLE STANDARDS	
BASIC DESIGN	API 602 BS 5352
SOCKET WELD	ANSI B16.11
THREADED	ANSI B120.1
TEST	API 598 BS 5146

SIZE	DIMENSIONS IN INCHES					
	1/2	3/4	1	1 1/4	1 1/2	2
A	3.15	3.54	4.33	5.00	5.00	5.12
B	5.70	6.14	7.32	8.50	10.04	10.75
C	3.54	3.54	4.33	4.72	5.51	5.51
D	0.39	0.55	0.71	0.94	1.22	1.44
B1	5.12	5.39	6.38	7.36	8.62	9.06
F THRD.	14.0	14.0	11.5	11.5	11.5	11.5
F SW.	0.85	1.07	1.33	1.68	1.91	2.41

SIZE	CV*	WEIGHT (LBS)
1/2	5.8	3.7
3/4	10.2	4.6
1	26.4	7.5
1 1/4	41.8	11.7
1 1/2	67	15.6
2	102	20.5

*CV-The volume of water in GL/MIN that will pass through a given valve with a pressure drop of 1PSI.

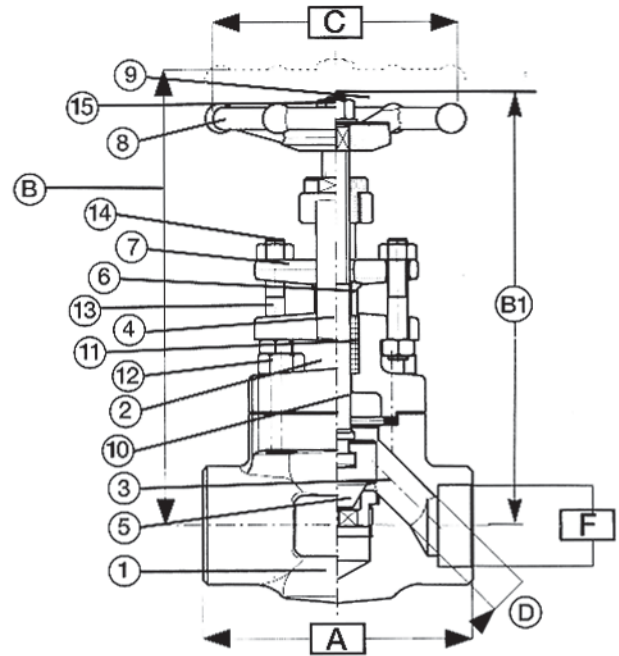
SHARPE® VALVES

FORGED STEEL GLOBE VALVE

**CLASS 800
ASTM A105
BOLTED BONNET
THREADED OR SOCKET WELD**

FIG. 44834

PART	NAME	MATERIAL
1	BODY	ASTM A105
2	BONNET	ASTM A105
3	DISC	ASTM A182/F6a
4	STEM	ASTM A182/F6a
5	SEATS	ASTM A182/F6a STELLITED
6	PACKING GLAND	AISI 316
7	GLAND FLANGE	ASTM A105
8	HANDWHEEL	CARBON STEEL
9	HANDWHEEL NUT	CARBON STEEL
10	GASKET SPIRAL WOUND	AISI 316 + GRAPHITE
11	PACKING	PREFORMED GRAPHITE
12	BONNET BOLT	ASTM A193/B7
13	GLAND STUDS	AISI 410
14	GLAND NUTS	ASTM A194/2H
15	NAME PLATE	ALUMINUM



APPLICABLE STANDARDS

BASIC DESIGN	BS 5352
SOCKET WELD	ANSI B16.II
THREADED	ANSI B120.1
TEST	BS 5146

SIZE	DIMENSIONS IN INCHES					
	1/2	3/4	1	1¼	1½	2
A	3.15	3.54	4.33	5.00	6.10	6.69
B	5.98	6.26	7.17	8.43	11.14	12.05
B1	5.51	5.71	6.54	7.56	10.12	10.94
C	3.54	3.54	4.33	4.72	5.51	5.51
D	0.35	0.47	0.69	0.89	0.98	1.18
F THRD.	14.0	14.0	11.5	11.5	11.5	11.5
F SW.	0.85	1.07	1.33	1.68	1.91	2.41

SIZE	CV*	WEIGHT (LBS)
1/2	1.4	3.7
3/4	3.8	4.4
1	7	7.0
1¼	10.2	11.7
1½	17.8	17.2
2	22	23.3

*CV-The volume of water in GL/MIN that will pass through a given valve with a pressure drop of 1PSI.

SHARPE® VALVES

FORGED STEEL CHECK VALVES

CLASS 800
ASTM A182/F316L
316L BODY AND BONNET
BOLTED COVER
THREADED OR SOCKET WELD

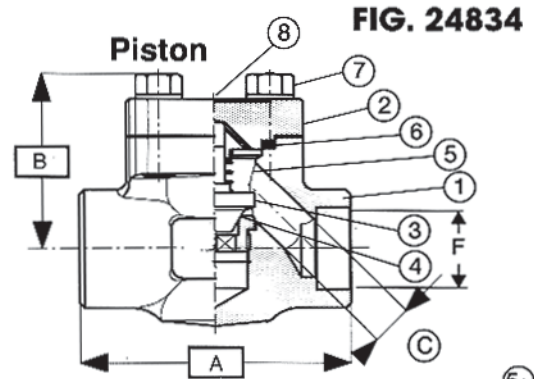
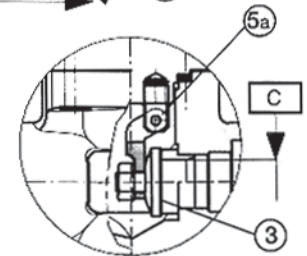


FIG. 24834/SC



PART	NAME	MATERIAL
1	BODY	ASTM A105
2	COVER	ASTM A105
3	PISTON/DISC	ASTM A182/F6a
4	SEAT	ASTM A182/F6a STELLITED
5	SPRING	STAINLESS STEEL 316
5a	SWING HINGE	ASTM A182/F6-F1316
6	GASKET SPIRAL WOUND	AISI 316 + GRAPHITE
7	BOLT	A193/B
8	NAME PLATE	ALUMINUM

APPLICABLE STANDARDS	
BASIC DESIGN	BS 5352
SOCKET WELD	ANSI 16.11
THREADED	ANSI B120.1
TEST	BS 5146

SIZE	DIMENSIONS IN INCHES					
	1/2	3/4	1	1 1/4	1 1/2	2
A	3.15	3.54	4.33	5.	6.10	6.69
B	1.89	2.01	2.48	2.80	3.39	3.90
C	0.35	0.47	0.69	0.89	0.98	1.18
F THRD.	14.0	14.0	11.5	11.5	11.5	11.5
F SW.	0.85	1.07	1.33	1.68	1.91	2.41

SIZE	CHECK CV*	PISTON CV*	WEIGHT (LBS)
1/2	3.4	1.2	2.4
3/4	7	3.2	4.0
1	14.2	5.8	5.7
1 1/4	20.4	9.1	7.9
1 1/2	30.2	13	12.1
2	56.2	17	18.5

*CV-The volume of water in GL/MIN that will pass through a given valve with a pressure drop of 1PSI.

SHARPE® VALVES

A DIVISION OF 

Toll-Free 1-877-7SHARPE
 E-Mail: sharpediv@aol.com
www.sharpevalves.com

504 West Wrightwood Ave.
 Elmhurst, IL 60126

Due to continuous development of our product range we reserve the right to change the dimensions and information contained in the leaflet as required.
 Teflon® is a registered trademark of E.I. DuPont.