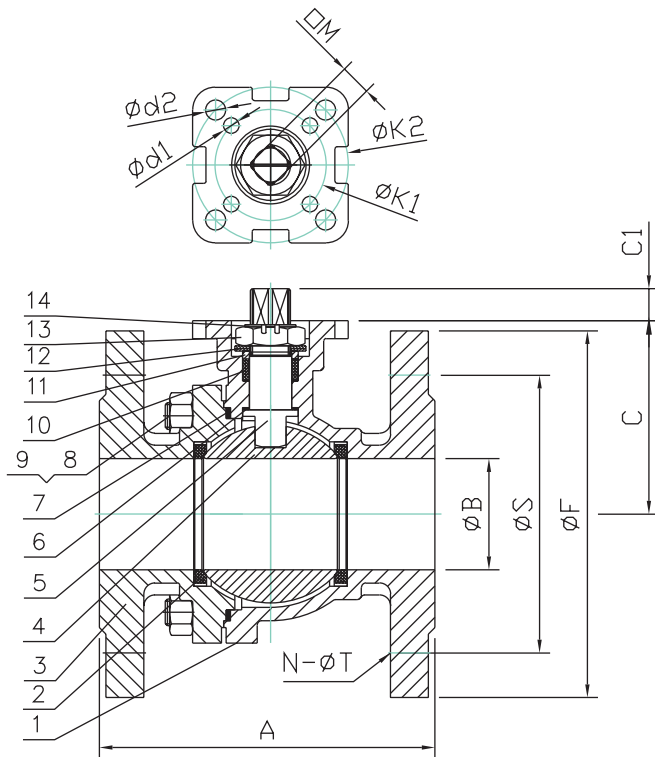


**Design and Technical Data**

**Model:  
DMF15-SS**

**Materials of Construction**

NO	PART NAME	MATERIAL
1	BODY	ASTM A351 CF8M
2	SEAT	PTFE
3	END CAP	ASTM A351 CF8M
4	BALL	SS316
5	STEM	SS316
6	THRUST WASHER	PTFE
7	GASKET	PTFE
8	STUD	SS304
9	NUT	SS304
10	PACKING	PTFE
11	PACKING FOLLOWER	SS304
12	BELLEVILLE WASHER	SS304
13	NUT	SS304
14	LOCK WASHER	SS301



**Optional:  
Lever Handle for Manual Operation  
Consult Factory**

**Dimensions and Weights**

SIZE	A	B	C	C1	d1	d2	F	K1	K2	N	S	T	M	Cv	Torque In-Lb	ISO 5211 Pattern	Weight Lb
1/2"	4.25	0.59	2.17	0.31	0.24	0.24	3.50	1.42	1.65	4	2.38	0.62	0.354	17	27	F03-F04	3.6
3/4"	4.62	0.79	2.17	0.31	0.24	0.24	3.88	1.42	1.65	4	2.75	0.62	0.354	43	44	F03-F04	4.9
1"	5.00	0.98	2.36	0.51	0.24	0.28	4.25	1.65	1.97	4	3.12	0.62	0.433	74	97	F04-F05	6.0
1 1/4"	5.50	1.26	2.56	0.51	0.24	0.28	4.62	1.65	1.97	4	3.50	0.62	0.433	192	124	F04-F05	8.4
1 1/2"	6.50	1.50	2.95	0.57	0.28	0.35	5.00	1.97	2.76	4	3.88	0.62	0.551	290	142	F05-F07	12.3
2"	7.00	1.97	3.27	0.57	0.28	0.35	6.00	1.97	2.76	4	4.75	0.75	0.551	410	221	F05-F07	15.0

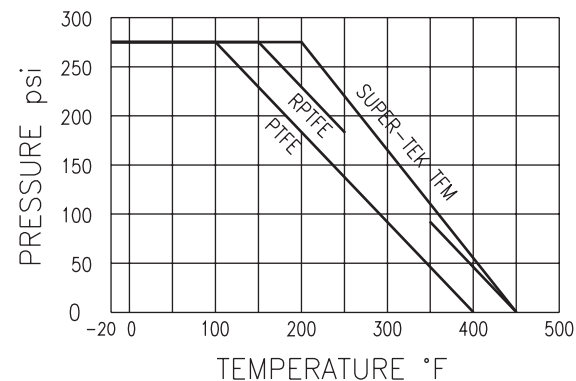
• Steam Rating 150 PSI WSP 250 PSI available with SuperTek III Seats.

• Vacuum Service to 20 microns

• Super-Tek (TFM) Seating provides for excellent service at elevated temperatures while providing low operating valve torque. Consult Factory.

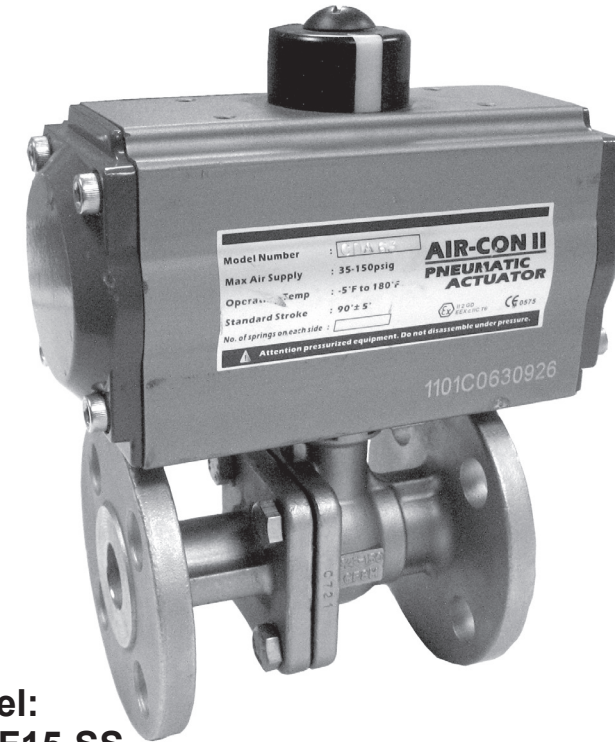
**Standards**  
**ANSI B16.34**  
**ANSI B16.5**  
**ANSI B16.10**  
**ISO - 5211**  
**API 598**  
**MSS - SP25**  
**PSS - SP72**

**Pressure/Temperature Chart**



**2PC DIRECT-MOUNT AUTOMATION SERIES**

**Flanged End DMF15 Econoflo Series**



**Model:  
#DMF15-SS**

**Valve Features**

- 2-Piece Body, Full Port Design
- 1/2" to 4" Sizes
- ANSI Class 150 Flanged Ends
- Body: CF8M, 316SS
- PTFE, RPTFE or TFM Seats
- Pressure Rating:  
275 PSI WOG
- Temperature Range:  
-20° F - 400° F

**Design Advantages**

- ISO 5211 Direct Mounting Pad - Provides for precise shaft alignment & eliminates the need for brackets and couplings
- Live Loaded Stem Assembly Extends cycle life
- Blowout Proof Stem
- Low Torque Design
- Investment Cast 316SS
- MTR Available, Consult Factory
- 100% Air Tested Under Water @ 100 PSI

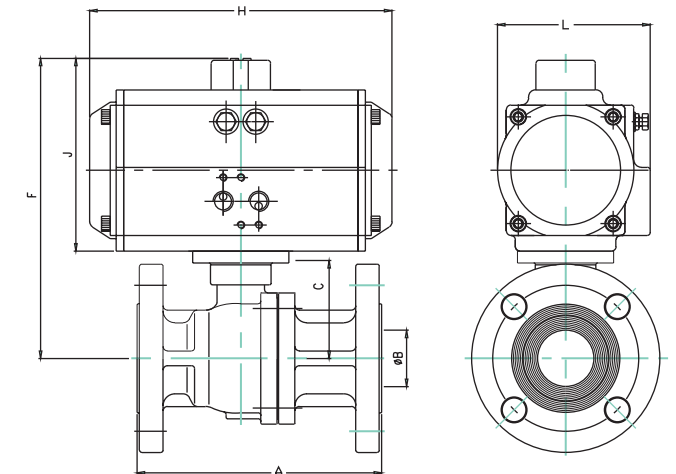
**Actuator Sizing Chart**

Flo-Tite Actuator Selections are based on units with standard seats with clean fluid only at ambient temperature.

Maximum Temperature Limitations for Direct-Mount Actuators: Electric 150° F; Pneumatic 180° F.

Special Brackets are available for higher temperatures, consult factory.

All valves are sized for line pressure up to maximum 275 WOG. For higher line pressure applications, consult factory to assure proper actuator sizing.



SIZE	A	B	C	SPRING RETURN 80 PSI				SPRING RETURN 60 PSI				DOUBLE ACTING 80 PSI				DOUBLE ACTING 60 PSI							
				Actuator	F	H	J	L	Actuator	F	H	J	L	Actuator	F	H	J	L	Actuator	F	H	J	L
1/2"	4.25	0.59	2.17	SR52	5.79	5.79	3.62	2.81	SR63	5.79	5.79	3.62	2.81	DA40	5.32	4.81	3.15	2.57	DA40	5.32	4.81	3.15	2.57
3/4"	4.62	0.79	2.17	SR63	5.79	5.79	3.62	2.81	SR63	6.40	6.61	4.23	3.27	DA52	5.32	4.81	3.15	2.57	DA52	5.79	5.79	3.62	2.81
1"	5.00	0.98	2.36	SR63	6.59	6.61	4.23	3.27	SR75	6.59	6.61	4.23	3.27	DA52	5.98	5.79	3.62	2.81	DA52	5.98	5.79	3.62	2.81
1 1/2"	6.50	1.50	2.95	SR75	7.65	7.24	4.70	3.74	SR83	8.02	8.03	5.07	4.05	DA63	7.18	6.61	4.23	3.27	DA75	7.65	7.24	4.70	3.74
2"	7.00	1.97	3.27	SR83	8.34	8.03	5.07	4.05	SR92	8.66	10.31	5.39	4.27	DA75	7.97	7.24	4.70	3.74	DA83	7.97	7.24	4.70	3.74

**Direct Mount Design  
Ideal for Low Profile, Cost Effective Operations**