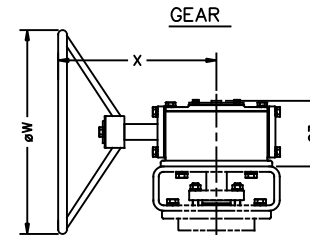
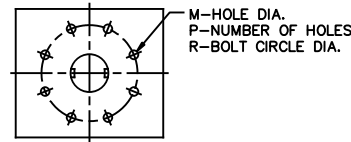


**TOP WORKS**



No.	Part Name
1	Body
2	Disc
3	Disc Retainer
4	Disc Seat
5	Body Seat
6	Body Seat Gasket
7	Disc Seal Gasket
8	Shaft
9	Disc Pin
10	Shaft Bearing
11	Thrust Bearing
12	Packing
13	Packing Gland
14	Gland Flange
15	End Cap
16	End Gasket
17	Bracket

Test Pressure(Psi-G) API 598		
Hydraulic		Air
Shell	Seat	Seat
1125	825	90

SIZE (inch)	A	B	G1	G2	E1	L1	L2	C	T	FLANGED DRILLING						TOP WORKS				KEY	GEAR			
										WAFER		LUG		FLANGE		M	P	R	S		G3	X	$\phi W$	
										N1	N2	H1	N2	N1	N2									H2
26	23.43	25.20	6.30	5.12	36.62	8.27	11.50	34.50	1-5/8"XBUN	-	4	-	28	20	8	1-3/4	1.22	8	14.02	3.54	0.98 X 0.55	8.15	23.82	31.50
28	25.59	25.98	6.30	5.12	37.40	9.02	11.50	37.00	1-5/8"XBUN	-	4	-	28	20	8	1-3/4	1.50	8	15.98	3.94	1.10 X 0.63	9.29	24.96	35.43
30	27.17	26.57	7.09	5.12	38.78	9.06	12.52	39.25	1-3/4"XBUN	-	4	-	28	20	8	1-7/8	1.50	8	15.98	4.33	1.26 X 0.71	9.29	24.96	35.43
32	28.15	27.95	7.09	5.12	40.16	9.49	12.52	41.50	1-7/8"XBUN	-	4	-	28	20	8	2	1.50	8	15.98	4.33	1.26 X 0.71	9.29	24.96	35.43
34	29.33	29.33	7.87	6.30	43.50	9.49	12.99	43.50	1-7/8"XBUN	-	4	-	28	20	8	2	1.50	12	19.02	4.72	1.26 X 0.71	10.83	32.32	39.37
36	30.11	30.91	7.87	7.87	46.65	10.75	12.99	46.00	2"XBUN	-	8	-	32	24	8	2-1/8	1.50	12	19.02	5.51	1.42 X 0.79	10.94	36.18	31.50

- NOTE.
- DESIGN : ANSI B16.34 & API 609
  - FLANGE CONNECTION : ANSI B16.47 SERIES A CLASS 300 (MSS SP-44 CLASS 300)
  - FACE TO FACE DIMENSION :  
 WAFER , LUGGED TYPE - MANUFACTURER STD  
 FLANGED TYPE -  
 26"-32" 36" - EIGHTH EDITION API 609 CATEGORY B  
 (ISO 5752 SERIES 13)  
 34" - MANUFACTURER STD

File No.	TP300WLF2636_02	Title	<b>TRIPLE OFFSET VALVE 300#</b>		
	Scale		NOT TO SCALE		
Rev.	2015-10-23	DWG No.	TP300WLF2636-02		
	Date of Issue				
No.		Drawn by	Kim,S.S		
Revision		Checked by	Byeon,J.S		
Date		Approved by	Choi,J.Y		

THE INFORMATION CONTAINED IN THIS DRAWING IS THE SOLE PROPERTY OF PRATT INDUSTRIAL. ANY REPRODUCTION IN ANY FORM WITHOUT WRITTEN PERMISSION OF PRATT INDUSTRIAL IS PROHIBITED.